

## Purple-lidded Wheelie Bin



### Paper and cardboard

Processed at a dedicated paper mill

### CLEAN, DRY AND LOOSE

Anything wet or damp please place in black bin



Paper (no glue/paint)    Cardboard tubes/boxes    Food packaging boxes



Cardboard egg boxes    Envelopes with/without plastic windows    Junk mail



Newspapers/magazines    Household packaging    Greetings cards and wrapping paper (no foil or glitter)

Flatpack all boxes and remove as much tape as possible. Staples in magazines are acceptable.

### No thanks

- Takeaway pizza/food boxes
- Shredded paper
- Tissues/wipes/kitchen roll
- Books
- Cigarette packets
- Wrapping paper (glittery/foil)



## Silver Wheelie Bin



### Recycling items

Processed at a recycling plant in Lincolnshire

### CLEAN, DRY AND LOOSE

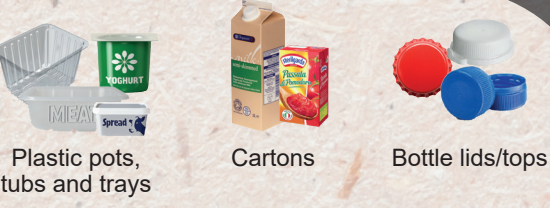
Squash cans and plastic bottles



Glass bottles and jars    Metal cans/tins    Foil/aerosols



Plastic bottles    Cleaning product bottles    Toiletry bottles



Plastic pots, tubs and trays    Cartons    Bottle lids/tops

### No thanks

- Soft plastics e.g. film/crisp packets/food pouches/plastic bags
- Paper & cardboard
- Batteries or electrical items
- Polystyrene
- Clothes/textiles
- Hard plastics e.g. old toys/plant pots
- Black or brown plastic food trays



## Black Wheelie Bin

### General waste

Majority turned into electricity in Lincoln

### NON-RECYCLABLE ITEMS

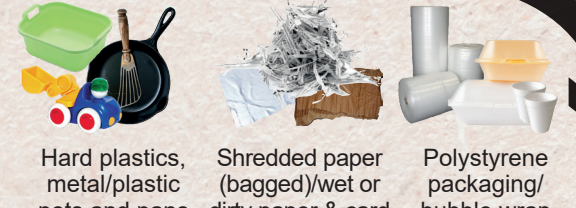
No electricals



Soft plastics e.g. crisp packets, sweet wrappers, food pouches, plastic bags, film, food wrapping, pet food bags



Food waste    Kitchen roll/wipes/tissues/napies    Takeaway packaging



Hard plastics, metal/plastic pots and pans    Shredded paper (bagged)/wet or dirty paper & card    Polystyrene packaging/bubble wrap

### No thanks

- Batteries/disposable vapes
- Electrical items
- Hot ashes
- Hazardous waste e.g. gas cylinders, asbestos

